



**“The All American”  
SWRRBA 2022 Show Catalog  
Triple Open/Youth Rabbit/Cavy +  
Specialties and Polish & Cinnamon National  
Shows**

**June 10-11, 2022  
Lea County Fairgrounds  
101 S Commercial Ave.  
Lovington, NM**



# PREORDER NOW FOR FREE DELIVERY TO SWWRBA SHOW



## Show Special:

Order and pre-pay online at **kwcages.com** on or before May 29, 2022 to receive: FREE SHIPPING TO THE SHOW.

In shopping cart, you must enter your zip code and select that you want it shipped to the SWWRBA show.



**KW Cages Texas**

**Jason Platt**

512-434-9525

800-447-2243

[facebook.com/kwcages.texas](https://facebook.com/kwcages.texas)

# Table of Contents

President's Letter – pg. 3

Veteran Recognition & Dedication – pg. 4-5

Show Committee and Contact Info – pg. 6

Show Judges and Registrar – pg. 7

Show Location with Maps – pg. 8-9

Banquet Information – pg. 9

Polish National Specific Information – pg. 10-12

Cinnamon National Specific Information – pg. 13-14

SWRRBA All American Specific Information – pg. 15-16

6 Class Classic & Meat Pen Information – pg. 17-18

Rex & Mini Rex Classic – pg. 18

Specialty Show List – pg. 19

Sanctioned Breeds – pg. 19

Schedule of Events – pg. 20-21

Judges' Conference Information – pg. 22

Youth Contests – pg. 23-24

Writer Thank You Raffle – pg. 25

Raffle – pg. 25

Show Vendor – pg. 25

SWRRBA Membership Information – pg. 25-26

Host Hotel/RV Info – pg. 26

ARBA Convention Info – pg. 27

Local Attractions & Restaurants – pg. 27

SWRRBA Show Rules – pg. 27-29

Required Posted ARBA Rules – pg. 30-31

Sponsors & Thank you – pg. 32

Sanctioned National Club Membership Information – pg. 33-36

Youth Contest Entry Form – pg. 37

Show Entry Form – pg. 38

SWRRBA Membership Form – pg. 39

Banquet RSVP Form – pg. 40

RV Request Form – pg. 41



# President's Letter

Hello Everyone,

I want to Personally Welcome you all back to the Great State of New Mexico, Land of Enchantment! It feels great to get back to SWRRBA's traditions and roots. It has been a wild ride for our hobby, so being able to be back to some bit of normal feels excellent!

SWRRBA members from all over the Southwest are busy preparing and helping to prepare for an event like no other in SWRRBA History. This year, we share our event with two National Breed Clubs for their National Show. SWRRBA is honored to be hosting both Cinnamon and Polish Nationals! I know many people are disappointed about the show date being moved to when the weather is much warmer. I among you understand how schedule changes and weather adjustments can affect our well-intended plans. However, put on the flip flops, shorts, & sunshades, and make an incredible, scenic road trip to the Southwest for an AWESOME rabbit show! I **promise** our facility will keep you and your rabbits and cavies cool in the June New Mexico weather!

This year's show will include the National Breed Shows for Polish and Cinnamon Rabbits, a Triple Open and Youth All Breed Show, a 6 Class Classic (open and youth), a Rex and Mini Rex Classic (O/Y), compiling into 55 Breed Specialty Shows, Meat Pen/Single Fryer/Roaster Jackpots, Judges Conference, Youth Contests with Sweepstakes, and the first-ever APRC Royalty Contest. If you are a sweepstakes points go-getter, keep in mind this is the show that can make or break you in the race for winning sweepstakes. This will be SWRRBA's Largest show in 9 years, and SWRRBA is **Excited!** This is all possible due to the support over the last nine years from exhibitors like you. When I took my oath of office in 2013, little did I realize the amazing talent I would partner with! For this show, I work alongside so many wonderful people to further our hobby, and it's genuinely an honor to work beside them all!

SWRRBA is a much-Blessed club. We must thank all of our community supporters, exhibitors, and our National Clubs for all their contributions to making this event what it is. Without their assistance, it would never be possible to bring this event to fruition. SWRRBA has missed New Mexico and is glad to be back in New Mexico. So, I say to all of you exhibitors, "Get Fired Up, Get loaded Up and Hit the Road! Come to New Mexico for an AWESOME RABBIT SHOW!"

See you all Soon!!

Zachary A. Weber  
SWRRBA Executive President  
SWRRBA June 2022 General Show Chair





# Veteran Recognition and Dedication

## William Palumbo

William Edward Palumbo entered his military career in Feb 1992. He grew up as the son of a Navy man but chose to join the Army. His first duty station was in Germany, a stark cultural difference from his home state of California. His first deployment was scheduled only months before his wife was due with a second child. He was deployed to Saudi Arabia to support Operation Desert Falcon to protect him from ballistic missile threats. As part of NATO's peacekeeping mission, he deployed to Bosnia in Operation Joint Force. In December of 2000, he participated in Operation Intrinsic Action in Kuwait, participating in joint exercises with locals. William saw two tours supporting Operation Iraqi Freedom and two more times in Afghanistan: Operation Enduring Freedom and Operation Resolute Support.



Between deployments, he supported his children with their 4-H projects. In 1998, he learned alongside his children about Rabbits, and the family settled on raising New Zealand and Tan rabbits. When not deployed, he assisted with many 4-H Rabbit Extravaganzas in Texas.

His volunteer work went beyond 4-H as he also volunteered with Operation Purple Camp. Operation Purple Camp is a week-long camp for kids dealing with the trauma of having a deployed parent. William spent a week alongside these kids, 24-7, being a group leader.

Nearing retirement and returning from another 3-year tour in Germany, the Palumbo family started raising and showing New Zealand rabbits in Texas.

William Retired in 2019 with a career spanning 27 years and reaching the rank of E8 1st Sergeant. In all, William spent 62 months deployed - just over five years. In addition, he also did a 2-year tour without his family to Korea. He was also on the trail at Fort Jackson for over two years, as a Drill Sergeant.





## Larry Brown

Larry Brown is a retired US Service Member after serving his Country for 27 years. Larry was in 2 significant deployments and his accomplishments include:

- Bronze Star
- Meritorious Service Medal
- 3 Army Accommodation medals
- 5 Army Achievement Medals



Larry Brown from Hobbs, New Mexico, will receive the SWRRBA Veterans Dedication in June 2022. Larry was nominated for this recognition by President Zachary Weber. Zachary met Larry when he was an active service member in Iraq, and they became pen pals in 2005 after Larry

did a speaking engagement for TVC 4H in Hobbs, New Mexico. Thank you for your service, good friend!



## **Show Committee**

**General Show Chair: Zachary Weber –  
swrrba.president@swrrba.org**

**Assistant Show Chair: Jason Platt – Jason.platt@swrrba.org**

**Superintendents: Brigitte Armstrong & John Terry**

**Open: Brigitte Armstrong –  
brigitte.armstrong@swrrba.org**

**Youth: John Terry – john.terry@swrrba.org**

**Commercial Show: Jason Platt – Jason.platt@swrrba.org**

**Rabbit Show Secretary: Katie Finch (512) 567-1249  
swrrbashowsecretary@swrrba.org**

**Cavy Show Secretary: Virginia Akin – tanrbt@aol.com**

**Breed Chairs:**

**Polish ~ Craig Crawford (Open) & Fernando Loflin (Youth)  
Cinnamon ~ Zachary Weber (Open & Youth)**

**SWRRBA Youth & APRC Royalty Contest Chair: Holli Walker –  
holli.walker@swrrba.org**

**SWRRBA Youth & APRC Royalty Contest Vice Chair: Elise Geter**

**Judge's Conference Chair: Jackie Milton –  
Jackie.milton@swrrba.org**

**Concessions Chef: Shanna Loflin**

**Raffle Admin: Shirley Hensley**

**Writers & Judges Liaison: Jennifer Smith**

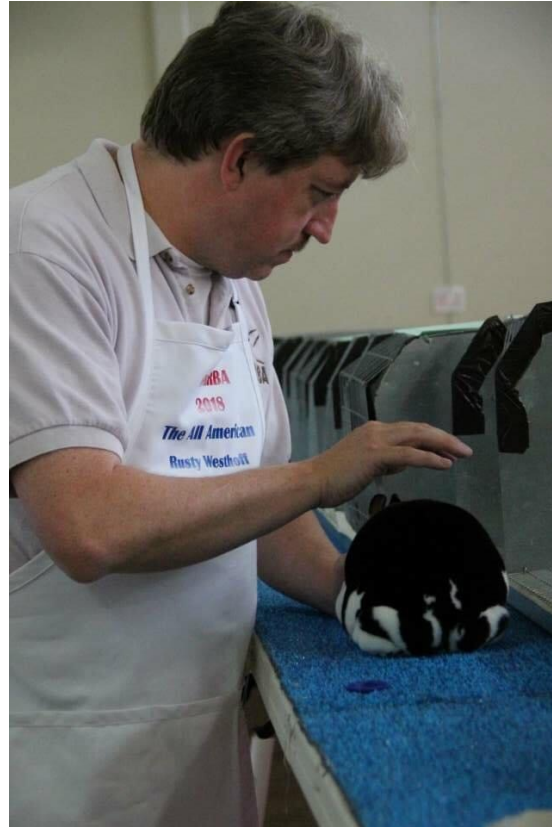


## Show Judges and Registrar

### **Judges:**

#### **Rabbit:**

Randy Shumaker (CA) (dual judge)  
 Josh Humphries (TN)  
 Scott Rodriguez (WY)  
 Lloyd Morgan (TX)  
 Vincent Consiglio (MD)  
 Jeff Tondre (TX)  
 Rusty Westhoff (TN)  
 Dr. Chris Hayhow (OH)  
 Andy High (AL)  
 Allan Ormond (UT)  
 MaryJo Terry (TX)  
 Armando Cabrera (CA)  
 Ryan Harrah (IN)  
 Misty Polasik (CA)  
 Dakota Manning (LA)  
 Jacinta Taulbee (OH)



#### **Cavy:**

Reed Tibbetts (TX)  
 Janis Tibbetts (TX)

### **Registrar:**

Chyann Stewart

## Show Location With Maps

All Shows for this event (National, All Breed, and Specialty) will be located at the Lea County Fairgrounds. The fairgrounds are located at:

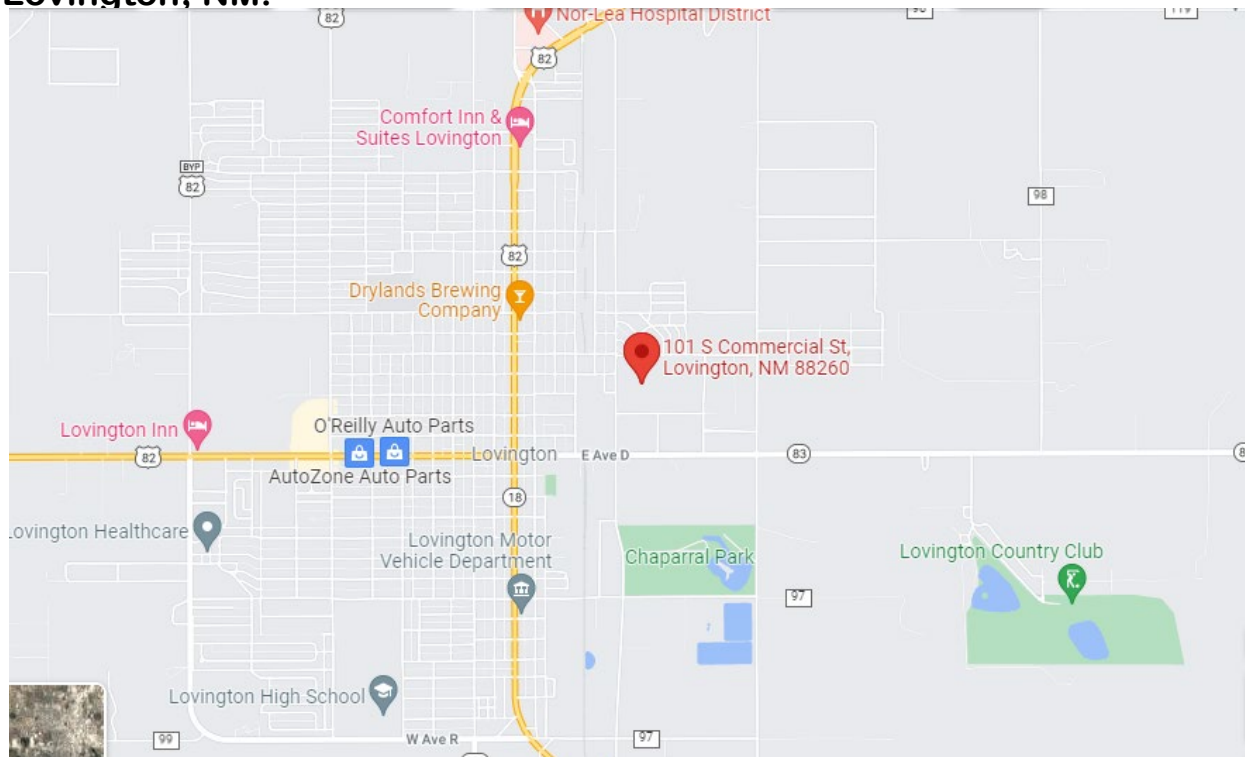
**101 S. Commercial St. Lovington, NM 88260**

***Rabbits are permitted to stay on site Friday and Saturday night. All animals must be removed 1 hour after completion of the final specialty show on Sunday morning.***

***This is a Carry Cage show, but coops are available for rent for \$2/coop if needed for participants in the National shows who live over 15 hours away. Please let us know by June 3, 2022 if coop rental is needed and how many you would like.***

***Notify us by emailing information the following to [swrrbashowsecretary@swrrba.org](mailto:swrrbashowsecretary@swrrba.org): Your name, Number of coops needed per breed, contact phone number.***

**Lovington, NM:**



Close up of Lea County Fairgrounds location:  
We will be using the Zia, Yucca, & Chaparral buildings.



## Banquet Information

The Polish National, Cinnamon National, and SWRRBA Awards Banquet will be located at the Hobbs Country Club in the Main Ballroom in conjunction with each other. The event will start at 7:30pm on Saturday, June 11. Dress can be casual or as fancy as you would like.

The menu for the banquet includes an All-You-Can-Eat Buffet of Fajitas (brisket, chicken, and beef), Green Chili Chicken Enchiladas, Beans, Rice, and Salad. Included Beverages are Tea and Water; alcoholic beverages will be available for purchase at the bar in the banquet venue. The cost for banquet attendance is \$24 per person. **Reservations for the banquet must be completed by June 3, 2022.**

Banquet location:

5001 W. Carlsbad Hwy  
Hobbs, NM 88240



HOBBS COUNTRY CLUB

EST. 1937



# Polish National Show Specific Details

## Judges:

- ~ Vincent Consiglio (VA)
- ~ Andy High (AL)
- ~ Randy Shumaker (CA)
- ~ MaryJo Terry (TX)



## Entry Information :

The Polish National Show is a pre-entry preferred, day-of-show entry allowed, no-comment card show. This is a carry-cage show but coops are available for rent if needed for \$2/head. Notification of number of coops needed is due by June 3, 2022.

Entries can be mailed to:

Katie Finch  
1907 Leon St  
Belton, TX 76513

Questions may be emailed to:

[swrrbashowsecretary@swrrba.org](mailto:swrrbashowsecretary@swrrba.org)

All entries must be **MAILED** with the associated fee and must be postmarked by May 23, 2022 for the early entry rate.

Fees for the APRC National Show are: \$7/head without cooping until May 23, 2022 (postmarked date). Fur entries are \$2/head.

Late Entry Fees will increase to \$18/head after May 23. If you wish to enter Day-of-Show, the national entry fee is \$18/head (keep in mind check in procedures as listed below).

Fees for changes are \$1.50/change (ear numbers only).

Youth entries must have a date of birth included with the entry.

## Check in Times and Change Info:

Check in at the show/grounds for the National show will be from 2pm until 8:15pm MST on June 10, 2022. All changes must be completed by 8:15pm on June 10, 2022. There will be no changes at the table allowed for the national show. Fees for changes during check in are \$1.50/change (ear numbers only). If you need to change more than a tattoo, the change will be considered a scratch and then a Day-of-Show entry charged at the Day-of-Show rate of \$18/head.

\* Please note, these procedures, deadlines, and fees are different from the All American Show; please review the section for information regarding the All American below.



## Awards:

Best of Breed: Trophy + \$50

Best Opposite of Breed: Trophy +\$25

Best of Variety: Trophy + \$10

Best Opposite Sex of Variety: Trophy +\$5

1<sup>st</sup>-5<sup>th</sup> place: Ribbons

## Schedule of Events:

### Friday:

~Showmanship Workshop – 12:00pm

~ Board Member Meeting – 4:15pm

~ Youth Scholarship Auction – 5:00pm

~Polish Specialty – 5:30pm

~ SWRRBA Youth Contests & APRC Royalty Contest – start 5:30pm and runs through Sat

### Saturday:

~Opening Ceremony – 7:45am

- ~Royalty Specific Check in/Contests start 7:00am
- ~National Show Start – 8:00am
- ~All Breed Show & Specialties Start – 8:00am
- ~APRC Membership Meeting – 12:30pm
- ~Banquet & Basket Auction – 7:30pm

Sunday:

- ~Polish Specialty Show – 9:00am

## National APRC Royalty Contest Info: **DUE AT TIME OF ENTRY**

For the First Time EVER, APRC is hosting a Youth Royalty contest! Entry to the Royalty contest can be completed by emailing: [holli.walker@swrrba.org](mailto:holli.walker@swrrba.org); entries are due by June 6; **no late entries will be accepted**. All contestants must be current members of APRC. The Royalty Contest is broken down by age as follows: King/Queen (15-18 years), Duke/Duchess (12-14 years), Prince/Princess (9-11 years), Lord/Lady (5-8 years). The age groups are defined as the age of the youth on the date of the contest.

All contestants must fill out the youth contest form at the conclusion of this catalog. To compete, each applicant must compete in the SWRRBA Sweepstakes Contest (every youth contest available), turn in the contest entry form complete with APRC information, and submit an essay. The essay guidelines are as follows:

1. Introduce yourself, where you are from, and why you raise Polish rabbits.
2. Discuss any significant awards you have won in your project and why they are important to you.
3. Discuss why you would like to be an APRC King/Queen, Duke/Duchess, Prince/Princess, Lord/Lady and what you would do with the title.
4. How are you a leader in your project?
5. What goals do you have for your project?
6. Who has guided you throughout your project the most? How?
7. What else would you like the judges to know?

There is a maximum page limit of 5 pages for the essay. Each youth is expected to author the essay in its entirety – be it by dictation or writing the content themselves.



# 50<sup>th</sup> Anniversary Cinnamon National Show

**Judge:**

Scott Rodriguez (WY)

**Entry Information :**

The Cinnamon National Show is a pre-entry preferred, day-of-show entry allowed, no-comment card show. This is a carry-cage show but coops are available for rent if needed for \$2/head. Notification of number of coops needed is due by June 3, 2022.



Entries can be mailed to:

Katie Finch

1907 Leon St

Belton, TX 76513

Questions may be emailed to:

swrrbashowsecretary@swrrba.org

All entries must be **MAILED** with the associated fee and must be postmarked by May 23, 2022 for the early entry rate.

Fees for the Cinnamon National Show are: \$7/head without cooping until May 23, 2022 (postmarked date). Fur entries are \$2/head.

Late Entry Fees will increase to \$18/head after May 23. If you wish to enter Day-of-Show, the national entry fee is \$18/head (keep in mind check in procedures as listed below).

Fees for changes are \$1.50/change (ear numbers only).

Youth entries must have a date of birth included with the entry.

**Check in Times and Change Info:**

Check in at the show/grounds for the National show will be from 2pm until 8:15pm MST on June 10, 2022. All changes must be completed by 8:15pm on June 10, 2022. There will be no changes at the table allowed



for the national show. Fees for changes during check in are \$1.50/change (ear numbers only). If you need to change more than a tattoo, the change will be considered a scratch and then a Day-of-Show entry charged at the Day-of-Show rate of \$18/head.

\*Please note, these procedures, deadlines, and fees are different from the All American Show; please review the section for information regarding the All American below.

## Schedule of Events:

### Friday:

- ~Showmanship Workshop – 12:00pm
- ~ Board Member Meeting – 4:15pm
- ~ Youth Scholarship Auction – 5:00pm
- ~Cinnamon Specialty – 5:30pm
- ~ SWRRBA Youth Contests – start 5:30pm and runs through Sat

### Saturday:

- ~Opening Ceremony – 7:45am
- ~National Show Start – 8:00am
- ~All Breed Show & Specialties Start – 8:00am
- ~Banquet & Basket Auction – 7:30pm

## Awards:

- Best of Breed: Trophy + \$20
- Best Opposite of Breed: Trophy +\$15
- Best Senior: Trophy + \$5
- Best Intermediate: Trophy + \$5
- Best Junior: Trophy +\$5
- 1<sup>st</sup>-5<sup>th</sup> Place: Ribbons

# SWRRBA All American Show Info

## Entry Info & Deadlines:

The SWRRBA All American Show is a pre-entry preferred, day-of-show entry allowed, no-comment card show. **All information regarding non-National specialty shows and the All-Breed Shows is found in this section.** This is a carry-cage show.

**Rabbit** Entries can be mailed to:

Katie Finch  
1907 Leon St  
Belton, TX 76513

Or entries can be emailed to:  
swrrbashowsecretary@swrrba.org  
\*\*\**Cavy* entries are emailed to

*Virginia Akin at tanrbt@aol.com*

If you choose to *MAIL* your entries, the entry must be postmarked by June 3,

2022 for the early entry rate. Emailed entries are due June 6, 2022 at 10pm MST for the early entry rate.

**Fees for the SWRRBA All American Show & Specialties are: \$4/head** without cooping until June 6, 2022 at 10pm MST.

Late Entry Fees will increase to \$6/head after June 6. If you wish to enter Day-of-Show, the entry fee is \$6/head. Fur entries are \$1.25/head.

Fees for changes are \$1.25/change/show (single change only – see explanation below). Fees are due upon check in for the All American Show and Specialties.

There is an entry (fillable PDF) form located on the Facebook page (Search Southwest Regional Rabbit Breeders Association), the SWRRBA member page under forms, and at the end of this catalog.

Youth entries must have a date of birth included with the entry.

## Check in Times and Change Info:

Check in for the All American will be Friday June 10 from 2:00-5:15pm MST and Saturday June 11 from 6:00am-7:30am. All changes for the All American must be completed by 7:30am on Saturday. Changes are





not allowed at the show tables. All changes for National Shows must be completed by Friday evening at 8:15pm MST; there will be NO check in for National Shows on Saturday morning.



Changes after the pre-entry cutoff and Day-of-show changes are \$1.25/change and are limited to single changes on the entry (IE: tattoo or variety or class, NOT tattoo and variety); otherwise, that change would be considered a scratch and a new entry. **There is no fee for scratched animals.**

So – if you entered #ERT Mini Satin Broken Sr. Buck and you

decided to change to #BEY Mini Satin Tort Sr. Buck, it is a new entry. The fee would be deleted for ERT, and the entry for BEY would be added as a day-of-show; the difference in fees is \$1.25/show. But, if your change is a single adjustment (like you discover that ERT is in fact a doe), the change is \$1.25/show. Of course, any change due to secretary error during the data entry process is free to correct.

## Awards:

- Best in Show for All Breed Shows: Trophies (Open and Youth)
- Best of Breed
- Best Opposite of Breed
- Best of the Best in Show: Trophy and Grooming Table
- 6 Class Classic: Trophies for BIS, CA\$H for Commercial Portion
- Rex & Mini Rex Classic: Trophy for BOB/BOSB
- Specialty Shows: Best of Breed and Best Opposite Sex: Trophies



## 6 Class Classic & Meat Pen Show

The 6 Class Classic will have both Open and Youth Divisions. All Youth entries **MUST** include a Date of Birth or the entry will be categorized as Open. The Entry deadlines are the same as the All American. The BIS winner will be eligible to compete in the Best of the Best In Show on Saturday.

Entries can be mailed to:  
 Katie Finch  
 1907 Leon St  
 Belton, TX 76513  
 Or entries can be emailed to:  
[swrrbashowsecretary@swrrba.org](mailto:swrrbashowsecretary@swrrba.org)



If you choose to *MAIL* your entries, the entry must be postmarked by June 3, 2022 for the early entry rate. Emailed entries are due June 6, 2022 at 10pm MST for the early entry rate.

Fees for the SWRRBA 6 Class Classic are: \$4/head without cooping until June 6, 2022 at 10pm MST. Late Entry Fees will increase to \$6/head after June 6. If you wish to enter Day-of-Show, the entry fee is \$6/head. Fur entries are \$1.25/head. **This fee schedule does not apply to Meat Pens, Single Roasters, or Single Fryers; see their schedule below.**

Fees for changes are \$1.25/change/show (single change only – see explanation below). Fees are due upon check in for the All American Show and Specialties run by SWRRBA. The 6 Class Classic is run as an All Breed Show with awards for Best in Show, Reserve in Show, and 2<sup>nd</sup> Reserve in Show.

### Meat Pen/Single Fryer/Single Roaster Show:

This portion of the 6 Class Classic has a different fee schedule due to CASH payouts of awards. Jason Platt is the Superintendent of this show. We will start with Open Meat Pens, then Single Fryers and Roasters. Youth will follow open.

Entry fees are \$20 per meat pen and \$10 per single fryer or roaster. You may have unlimited entries. Weight and Age requirements for entered rabbits will follow the ARBA Standards.

**Breed Date is March 3, 2022**

## Payout Information

Open and Youth Meat Pens will show in breeds separately. 1<sup>st</sup> and 2<sup>nd</sup> Place meat pens in each breed will compete against the other breeds for the prize money, awarded through 5<sup>th</sup> place. There will be a % payout.

Open and Youth Single Fryers will show separately by breed. 1<sup>st</sup> and 2<sup>nd</sup> Place Fryers in each breed will compete against the other breeds for the prize money, awarded through 5<sup>th</sup> place. There will be a % payout.

Open and Youth Roasters will show separately by breed. 1<sup>st</sup> and 2<sup>nd</sup> place in each breed will compete against the other breeds for the prize money, awarded through 5<sup>th</sup> place. There will be a % payout.



## Rex & Mini Rex Classic

The Rex & Mini Rex Classic will have both Open and Youth Divisions. All Youth entries **MUST** include a Date of Birth or the entry will be categorized as Open. The Entry deadlines are the same as the All American. The BIS winner will be eligible to compete in the Best of the Best In Show on Saturday.

Entries can be mailed to:

Katie Finch

1907 Leon St

Belton, TX 76513

Or entries can be emailed to:

[swrrbashowsecretary@swrrba.org](mailto:swrrbashowsecretary@swrrba.org)

If you choose to **MAIL** your entries, the entry must be postmarked by June 3, 2022 for the early entry rate. Emailed entries are due June 6, 2022 at 10pm MST for the early entry rate.

Fees for the Rex & Mini Rex Classic are: \$4/head without cooping until June 6, 2022 at 10pm MST. Late Entry Fees will increase to \$6/head





after June 6. If you wish to enter Day-of-Show, the entry fee is \$6/head. Fur entries are \$1.25/head. Changes are \$1.25/change.

## Specialty Show List

### Specialty List:

The following specialties will be conducted at the All American. Open/Youth specifications are on each specialty line.

Specialties are listed in alphabetical order by breed.

- 6 Class Classic (O/Y) – with Meat Pen, Single Fryer, & Roaster classes
- All Angoras (O)
- All Rex & Mini Rex Classic (O/Y)
- Californian (O/Y)
- Cavy (O/Y) – Triple Show
- Champagne D'Argent (O)
- Checkered Giant (O)
- Cinnamon (O/Y) + National Show
- Dutch (O/Y)
- Flemish Giant (O/Y)
- Florida White (O/Y)
- Havana (O/Y)
- Himalayan (O/Y)
- Holland Lop (O/Y)
- Jersey Wooly (O)
- Lionhead (O/Y)
- Mini Lop (O/Y)
- Mini Rex (O/Y)
- Mini Satin/Satin (O/Y)
- Netherland Dwarf (O/Y)
- New Zealand (O/Y)
- Double Polish (O/Y) + National Show
- Rex (O/Y)
- Tan (O)

## Sanctioned Breeds

The following sanctions have been obtained for the all-breed and specialty shows:

All Angora (O), Californian (O/Y), Cavy (O/Y), Champagne d'Argent (O), Checkered Giant (O), Cinnamon (O/Y), Dutch (O/Y), Flemish Giant (O/Y), Florida White (O/Y), Havana (O/Y), Himalayan (O/Y), Holland Lop (O/Y), Jersey Wooly (O/Y), Lionhead (O/Y), Mini Lop (O/Y), Mini Rex (O/Y), Mini Satin (O/Y), Netherland Dwarf (O/Y), New Zealand (O/Y), Polish (O/Y), Rex (O/Y), Satin (O/Y), Tan (O/Y)

If you would like to donate an additional breed sanction, please contact show secretary at [swrrbshowsecretary@swrrba.org](mailto:swrrbshowsecretary@swrrba.org) no later than **21 days** prior to the show to obtain ARBA sanction numbers and information on the sanction process.

## Schedule of Events

**Friday: (All times are MST)**

- ~Show Site Opens at 10:00am
- ~Showmanship Workshop at 12:00pm
- ~Judges Conference starts at 1:00pm
- ~Check-in: 2:00-5:15pm for All breed Show and  
Until 8:15pm for National shows

**\*\*\*Note: ALL NATIONAL SHOW CHECK INS MUST BE COMPLETED BY FRIDAY NIGHT AT 8:15PM. NO CHECK IN FOR NATIONAL SHOWS WILL OCCUR ON SATURDAY MORNING.\*\*\***

- ~Polish & Cinnamon Specialty starts at 5:30pm
- ~6 Class Classic starts at 6:00pm
- ~All Breed Open/Youth starts at 6:30pm
- ~Single O/Y Cavy starts at 6:30pm

**Saturday: (All times are MST)**

- ~Show Site Opens at 6:00am
- ~All American Check-in: 6:00-7:30am
- ~Opening Ceremony: 7:45am
- ~National Polish Show starts at 8:00am
- ~National Cinnamon Show starts at 8:00am
- ~Open/Youth All Breed Shows start at 8:00am
- ~Youth Contests: Assigned times will begin at 8am and will conclude by 2pm; each youth should be aware of their scheduled time



~Specialties will be worked in throughout the all-breed shows – listen to the Superintendents for Specialty Updates

~Double O/Y Cavy Show starts at 9:00am

~All Breed Best in Show & Best of the Best Concluded no later than 6:00pm

~Banquet 7:30pm at Hobbs Country Club

## Sunday:

~Show Site Opens at 7:00am

~Polish Specialty 8:00am

~See Polish Specialty Club flyer for Specialty information

~Please plan on having all animals removed from show room 1 hour after the conclusion of the specialty

Times are subject to change depending upon entry volume and show needs; listen to the Superintendents and follow the Facebook event page for up-to-date time changes!

## Animals Eligible to Compete in Best of Best in Show:

- ~ Both National Show Winners (Polish & Cinnamon), Open & Youth
- ~ Each of the All-Breed BIS Winners (Open and Youth)
- ~ 6 Class Classic Winners (Open and Youth)
- ~ Rex and Mini Rex Classic Winners (Open and Youth)





# Judges Conference

The Judges Conference will occur on Friday afternoon starting at 1pm. We are excited to host a wonderful program with knowledgeable speakers! Attendance at the conference is FREE. Attendees have the option to join us in a lunch meal for \$12/person to include hamburgers, chips, fruit, and a soda or water.

Contact information for the Judges' Conference:  
Jackie Milton – Jackie.milton@swrrba.org

## Conference Topics:

- Josh Humphries – Posing & Handling
- Ryan Harrah – Mini Rex
- Vincent Consiglio – Polish
- Jason Platt – Meat Pens
- Landon Terry – Satin/Mini Satin
- Scott Rodriguez – Netherland Dwarf
- Randy Shumaker – Cinnamons
- Al Esterline – New Zealand

\*Topics may be added or amended as deemed necessary by show staff.



# SWRRBA Youth Contests & Sweepstakes

Youth contests are held annually and have no fee to participate! The goal of this event is to promote excitement, knowledge, and creativity regarding our hobby.

Please have your entries postmarked by May 23, 2022 or emailed by May 30; this will allow us to prepare the best possible experience for our youth!

Youth Contest Email Entries may be sent to:

Holli.walker@swrrba.org

Or to the following postal address:

Southwest Regional RBA

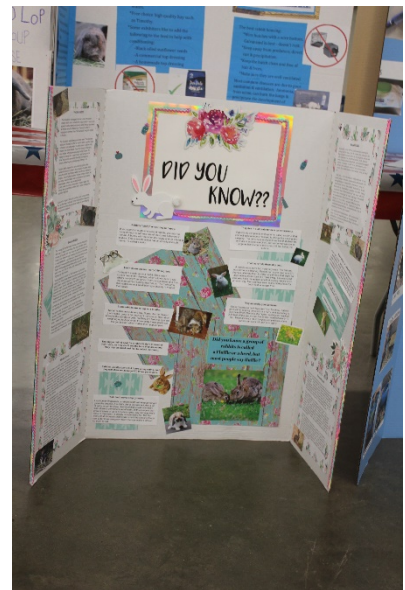
Attn: Youth Contest Dept

PO Box 3893

Hobbs, NM 88241

## General Contest Rules:

1. Youth contests are FREE to enter.
2. All participants must meet age requirements as listed as below. Age is determined by the age of the youth on the day of the contest. Dates of birth will be required to be on the entry form for youth contests.
3. Participants can enroll in the SWRRBA contests before the deadline on Friday, June 10 at 7pm, but early entry is preferred.
4. Participants will be assigned a time for which they will complete each of their contests. If a contestant fails to be present for their assigned time, their entry will be disqualified.
5. A reasonable grace period will be allowed to allow for the possibility that a youth's rabbits/cavies are being exhibited during their assigned time.
6. All contests will be concluded by 2pm MST.
7. Participants may request score sheets at the conclusion of the awards disbursement.



8. No contestant may enter any age group other than their own true age; this includes “aging-up.”

### Age groups:

|              |                 |
|--------------|-----------------|
| Pre-Junior   | 2-4 years old   |
| Junior       | 5-9 years old   |
| Intermediate | 10-14 years old |
| Senior       | 15-19 years old |

### SWRRBA will be hosting the following youth contests:

| Contest                             | Age Divisions                                  | Description   |
|-------------------------------------|--|---|
| Breed ID                            | Junior<br>Intermediate<br>Senior               | Contestants will observe through a variety of photos and identify the breeds in the photos. The contestant must identify the following: Breed, Class (4/6), Showroom Variety, and Registration Variety.   |
| Showmanship                         | Pre-Junior<br>Junior<br>Intermediate<br>Senior | Pre-Junior will compete on a different standard; they will be judged on handling and knowledge of their rabbits. Other age groups will be scored based upon the ARBA showmanship scorecard. Participant should be able to demonstrate knowledge on their own without prompting or coaching. |
| Judging                             | Intermediate<br>Senior                         | Contestants will judge 3 breeds of rabbits in classes of 4 by photo. The contestant will have a placing card and will place the rabbit's picture on the cards in the order of the rabbits they decide fit the closest representation of the ARBA standard.                                  |
| Rabbitry/Caviary Information Poster | Pre-Junior<br>Junior<br>Intermediate<br>Senior | Contestants will create an information poster regarding a topic they desire others to learn regarding rabbits or cavies. The contestant will be judged based on a rubric and must demonstrate knowledge and creativity.   |
| Costume Contest                     | Pre-Junior<br>Junior<br>Intermediate<br>Senior | The costume contest is a fun show for all ages to dress their rabbits/cavies and themselves (if they desire) to a theme of their choosing. Entries will be judged based on creativity. This contest IS required if the youth desires to compete for sweepstakes.                            |
| Sweepstakes                         | Pre-Junior<br>Junior<br>Intermediate<br>Senior | Sweepstakes participants must enter each contest according to their age group. Failure to participate in one of the contests will result in disqualification from sweepstakes. Scores from each contest will be compiled to determine sweepstakes winners for each age group.               |



## Writer Thank You Raffle



As a thank you to our writers, all Friday writers will be given free raffle tickets to the club raffle. Saturday writers will be entered into a thank you raffle for \$50 cash! The more you write, the more you are entered!

## Club Raffle

We will have an amazing raffle table! Our raffle is talked about across the country – come see us live up to the hype! We are happy to accept any donations for the table as well!



## Vendor Information



**KW Cages – Jason Platt (512) 434-9525**

Special orders may be placed at: [KWCAGES.com](http://KWCAGES.com) and will be delivered at no extra cost to the show! Preorders are due by 5/29/2022.

## SWRRBA Membership Information

Membership to the Southwest Regional Rabbit Breeders Association has many perks to include, access to corporate rates on Choice hotel rooms, discounts on show SWRRBA show entries,

access to a support network beyond simply the rabbit hobby, eligibility for scholarships, and much more!

If you would like to become a member, please contact Zack Weber at [swrrba.president@swrrba.org](mailto:swrrba.president@swrrba.org), Shirley Hensley at [swrrba.vicepresident@swrrba.org](mailto:swrrba.vicepresident@swrrba.org) or Katie Finch at [swrrbashowsecretary@swrrba.org](mailto:swrrbashowsecretary@swrrba.org) – thank you! We also have a membership form attached to the end of the catalog for your convenience!



## Host Hotel/RV Information



The Hilton Garden Inn in Hobbs, NM has graciously offered to host our exhibitors! Rates are: ***\$89/night +tax*** for either **2 Queens** or a **single King bed**.

Call (833) 792-3754 and mention the Southwest Rabbit Breeders

Association Rabbit Show during booking to secure your room at the \$89 rate!

The hotel address is: 4620 N Lovington Hwy, Hobbs, NM 88240

Full RV Hookups are available for rent for \$18/night. Includes water, electricity, and sewer. See attached RV reservation form. Forms are due by June 1, 2021 and are on a first come, first served basis.

# ARBA Convention



**Make Plans to attend the ARBA 2022 National Convention in Reno, NV on Oct 30-Nov2!**

## Local Attractions and Restaurants

Zia Park Casino, Core Recreation Center, and Brantley Lake State Park are all fun attractions exhibitors may enjoy while in Hobbs!

Popular restaurants include: Empire Seafood & Buffet, Pacific Rim, Starting Gate, La Mirrador, Cattle Barron, Iron Skillet Café, & many more!

## SWRRBA Show Rules

1. This show will be governed by the latest ARBA rules.
2. Animal entry signifies acceptance of ARBA and SWRRBA show rules.
3. The SWRRBA, nor the show site facility will be responsible in case of fire, theft, accidents, or vandalism. Every precaution will be taken to prevent fire, theft, vandalism, and accidents from occurring.
4. Any exhibitor in good standing of the ARBA & SWRRBA will be allowed to enter the show. It is NOT required that a person be an ARBA or SWRRBA member to enter.
5. Show age groups are by ARBA requirements. Ages 5-19 are classified as Youth (but may enter Open if they so choose instead of exhibiting as a youth) and ages 0-4 and 19+ are categorized as Open exhibitors.



6. Any animal showing signs of disease or illness will be prompted to leave the building immediately.

7. Disrespect shown toward judges, show officials, or support staff will result in disqualification and a request to leave the event without reimbursement. Non-sportsmanlike behavior will result in being asked to depart, entries will be scratched, and fees forfeited.

8. Show officials reserve the right to refuse entry for any exhibitor.

9. Parents/Guardians must supervise all youth under the age of 18. Children are not allowed to run in the building at any time.

10. Each class will only be announced 3 times. After the third time, the rabbits on the table will be judged accordingly and the missing rabbits will be scratched without reimbursement.

11. Awards must be claimed while still at the show. If an exhibitor desires to have awards mailed, they must make arrangements prior to the end of the show and are responsible for all shipping fees.

12. Entry fees are charged according to the advertised fee schedule. Adjustments to fees will only occur in the case of an error made by show staff. It is the responsibility of the exhibitor to ensure that entries are received by the show secretary prior to fee change cutoff times/dates.

13. All animals must be contained in leak-proof, solid-based carriers.

14. Feces and animal bedding cannot at any time be dumped in the indoor trash containers. Exhibitors may ask for a garbage can liner so they may tend their animals and dispose of the waste in outdoor dumping areas.

15. Exhibitors must keep their area clean and orderly while occupying the building during the show and when leaving. Please be cognizant of fire safety and escape pathways.

16. Exhibitors may not enter the same rabbit in both open and youth for the same show. If an exhibitor desires to change divisions, the changes must be complete prior to posted check in deadlines.

17. Any issue that arises during the event will first be resolved by the immediate chair of that area. The show Superintendent will have full discretion if the conflict cannot be resolved by the chair of that portion of our program.

18. If you wish to file a formal complaint with SWRRBA, you may do so. The complaint forms are available at the show Superintendent table. A fee will be charged in the instance of a protest regarding judging procedures as per policy.

19. No changes or substitutions can be made at the show table. Both must be completed at the secretary's table prior to the entry deadline. A verification slip will be

given to the exhibitor by the secretary if there is a problem requiring a change during the show; changes at the table will not be permitted without this slip for any reason.

20. No other club or persons of another club may sell items or hold fundraisers without prior permission from the show committee. Exhibitors can sell rabbits within the showroom without permission from the show committee. We do ask that rabbits for sale be advertised as their true quality – pet, brood, or show, with show being without any disqualifications and within acceptable condition for show standards. Again, no ill animals may be present in the building.

21. SWRRBA will accept cash, checks, and money orders. If paying with a check, the return check policy will apply. We do NOT currently accept credit/debit cards or PayPal/Venmo.

22. NO tobacco products in any part of the show building. Outside smoking must be 25 feet from any entrance. Minors MAY NOT use tobacco/nicotine products at any time on the premises.

23. No outside food or drink may be brought into showroom. Exceptions are made for dietary restrictions/needs.

#### **JUDGES WILL BE SENT A COPY OF SHOW RULES**

**A copy of show catalog will be on hand at show**

## **Return Check Policy**

1. SWRRBA will accept checks as payment, however returned checks will be charged a \$60 penalty and all future entries will be required to be remitted as cash.

2. The author/exhibitor is liable for the \$60 return check fee as well as any fees charged by their financial institution.

3. The author of the original check will have a period of 10 days to pay in full the check, bank fees, and SWRRBA returned check fee.

4. If legal action is required to settle an account, the author of the check is held liable for any legal fees required to settle the case. If litigation is required for resolution, the exhibitor/author of the check will be barred from future SWRRBA shows.

# Required Posted ARBA Show Rules

## OFFICIAL SHOW RULES OF THE AMERICAN RABBIT BREEDERS ASSOCIATION, INC. EFFECTIVE 10/26/21

**SECTION 15.** A show catalog must be furnished to any person upon request. The show catalog must be furnished to all hired judges and registrars at least 14 days prior to the show date. The show catalog must contain the club name, show date, show location, entry deadline, time judging will start, the name and address of the show secretary and show superintendent, and any required specialty club information. The catalog should supply as much information as possible and must be available at least 14 days prior to the show date. The following must be printed in the show catalog:

(A) Open Sanctioned Show – OFFICIAL ARBA SANCTIONED SHOW, ARBA Executive Director, PO Box 5667, Bloomington, Illinois 61702. ARBA website: [www.arba.net](http://www.arba.net). Membership Dues: \$20.00 per yr., 3 yrs. \$50.00. Combination Husband & Wife: \$30.00 per yr., 3 yrs. \$75.00.

(B) Youth Sanctioned Show – OFFICIAL ARBA YOUTH SANCTIONED SHOW, ARBA Executive Director, PO Box 5667, Bloomington, Illinois 61702. ARBA website: [www.arba.net](http://www.arba.net). Membership Dues: \$12.00 per yr., 3 yrs. \$30.00.

(C) Announcement of the date and place of the next ARBA Convention and Annual Meeting.

(D) 1-The American Rabbit Breeders Association will cancel and reschedule sanctions at no cost to the clubs for show site locations within 125 miles, which had a confirmed outbreak of RCV/RHD/VHD in domestic rabbits within the past 60 days of the entry deadline. A host club must refuse entries from exhibitors placing an entry from all locations within 125 miles, which had a confirmed outbreak of RCV/RHD/VHD in domestic rabbits within the past 60 days of the entry deadline.

2- The American Rabbit Breeders Association will cancel and reschedule sanctions at no cost to the clubs for show site locations within 30 miles, which had a confirmed outbreak of RCV/RHD/VHD in wild / feral rabbits within the past 60 days of the entry deadline. A host club must refuse entries from exhibitors placing an entry from all locations within 30 miles, which had a confirmed outbreak of RCV/RHD/VHD in wild / feral rabbits within the past 60 days of the entry deadline.

3- Please note the following recommendations:

- a) Exhibitors must follow ARBA recommended biosecurity guidelines.
- b) Exhibitors and show officials must wash the undercarriage and tires of all vehicles and trailers before going to and after departing a show.
- c) Exhibitors residing in a state with a confirmed case of RHDV in the past 60 days must have a health certificate (CVI) issued within fourteen (14) days of the show.
- d) Use an appropriate disinfectant that will inactivate RHDV.



- e) The ARBA club show committee has the right to refuse an entry.
- f) The ARBA recommends carrying cages be cleaned prior to going to a show. The ARBA recommends the following products: kitty litter, newspaper, puppy pads, or other inert products used for bedding.
- g) State and county officials may impose additional stricter sanctions / requirements.
- h) Show officials can designate additional requirements to attend an ARBA sanctioned show.
- i) If you are not comfortable, please continue to maintain biosecurity at your residence.

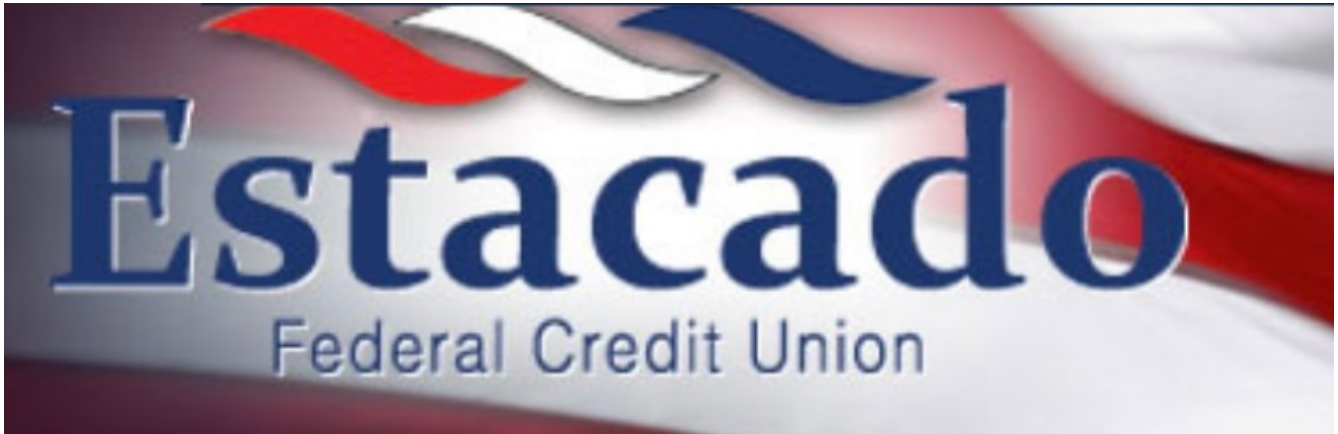
**SECTION 16.** The show sponsor may print the following in their show catalog: All youth entries must be carried to the show table by a youth. Exhibitors do not have to carry their own animals to the show table.

**SHOULD YOU HAVE ANY QUESTIONS REGARDING THESE RULES, CONTACT YOUR ARBA DISTRICT DIRECTOR OR THE ARBA OFFICE.**

A complete list of ARBA rules can be found at [arba.net](http://arba.net) under the “Member Resources” tab, then “Shows.”



## Thank you to our Sponsors!



*Any Cleaning Service,  
Artesia, NM*  
★★★★★



# Sanctioned National Club Membership Information

**\*\*All Membership rates are for US Members only – see club websites for international membership rates**

## National Angora Rabbit Breeders Club

**Membership:** Adult – \$10, \$18 2 yrs, \$27 3 yrs; Youth – \$5, \$10 2 yrs, \$15 3 yrs; Rabbitry (*two people at the same address*) – \$15, \$25 2 yrs, \$35 3 yrs; Family – \$20, \$30 2 yrs, \$40 3 yrs [www.nationalangorarabbitbreeders.com](http://www.nationalangorarabbitbreeders.com)

## American Argente Brun Rabbit Club

**Membership:** Single Adult \$10.00, 3 Years – \$25.00; Youth \$8.00, 3 Years \$20.00; Family \$25.00, 3 Years \$60.00; Couples \$15.00, 3 Years \$35.00

## American Britannia Petite Rabbit Society

**Membership:** Adult – \$10, \$25 3 yrs; Youth – \$7.50, \$20 3 yrs; H/W – \$15, \$40 3 yrs; Family – \$15 (*plus \$2.00/child*), \$40 3 yrs (*plus \$5/child*) [www.abprs.com](http://www.abprs.com)

## Californian Rabbit Specialty Club

**Membership:** Adult – \$15, 3 yrs \$42; Youth – \$10, 3 yrs \$28; Husband/Wife – \$20, 3 yrs \$55; Foreign – \$25; 3 yrs \$75.00; Additional youth in same family \$5.00 for 1 year / \$15.00 for 3 years

## American Cavy Breeders Association

**Membership:** Adult – (*New*) \$25, (*Renewal*) \$20, 3 yrs (*New*) \$60, 3 yrs (*Renewal*) \$55; Youth – (*New*) \$20, (*Renewal*) \$15, 3 yrs (*New*) \$45, 3 yrs (*Renewal*) \$40; Family – (*New*) \$30, (*Renewal*) \$25, 3 yrs (*New*) \$75, 3 yrs (*Renewal*) \$70 [www.acbaonline.com](http://www.acbaonline.com)

## Champagne D'Argent Rabbit Federation

**Membership:** Adult (*New*) – \$15, \$32 3 yrs; Adult (*Renew*) – \$10, \$27 3 yrs; Youth (*New*) – \$13; Youth (*Renew*) – \$8; Husband/Wife (*New*) – \$17, \$38 3 yrs; Husband/Wife (*Renew*) – \$12, \$33 3 yrs

## American Checkered Giant Rabbit Club

**Membership:** (*Adult*) 1 year – \$20; 3 years – \$50; H/W – 1 year – \$25, 3 years – \$65; Foreign (*Adult*) 1 year – \$20; 3 years – \$50; (*\$5 each additional member in the same household*) [www.checkeredgiant.org](http://www.checkeredgiant.org)



### American Dutch Rabbit Club

**Membership:** Adult – (New) \$15, (Renewal) \$10; Youth – (New) \$13, (Renewal) \$8; Husband/Wife – (New) \$19, (Renewal) \$14; Family – (New) \$25, (Renewal) \$20; [www.dutchrabbit.com](http://www.dutchrabbit.com)

### American Dwarf Hotot Rabbit Club

**Membership:** Adult – \$10, 3 yrs \$25; Youth – \$7, 3 yrs \$17; Husband/Wife (2 Adults) – \$15, 3 yrs \$35; Family – \$15 (\$2/child); Lifetime (1 Adult) – \$150, (2 Adults) \$200;

**NEW MEMBERS ONLY – Add \$5 S&H Per Household for Materials**  
[www.adhrc.com](http://www.adhrc.com)

### National Federation of Flemish Giant Rabbit Breeders

**Membership:** Adult/Youth – (New) \$20, (Renewal) \$15; Husband/Wife – (New) \$20, (Renewal) \$15; Family – (New) \$22 + \$3.00 per child, (Renewal) \$20 + \$2.00 per child [www.nffgrb.org](http://www.nffgrb.org)

### Florida White Rabbit Breeders Association

**Membership:** Adult – \$10.00, \$27 3 yrs; Youth – \$8, \$21 3 yrs; Husband/Wife (or Partners) – \$13, \$34 3 yrs; Family – \$18, \$50 3 yrs; Sanctions: \$10 open, \$5.00 youth, \$10.00 open/youth combination [www.fwrba.net](http://www.fwrba.net)

### Havana Rabbit Breeders Association

**Membership:** Adult – \$8, \$20 3 yrs; Youth – \$6, \$14.50 3 yrs; Husband/Wife – \$11.50, \$29.50 3 yrs; Family – \$11.50 (\$3.50/child)

### American Himalayan Rabbit Club

**Membership:** Adult – \$10, \$25 3 yrs; Youth – \$8, \$20 3 yrs; Husband/Wife – \$12, \$30 3 yrs; Family – \$12, \$30 3 yrs [www.himalayanrabbit.com](http://www.himalayanrabbit.com)

### Holland Lop Rabbit Specialty Club

**Membership:** Adult – \$15; Youth – \$12; Husband/Wife – \$19; Family – \$27  
[www.hlrsc.com](http://www.hlrsc.com)

### Hotot Rabbit Breeders International

**Membership:** Adult – \$10; Youth – \$5; Husband/Wife – \$14

### National Jersey Wooly Rabbit Club

**Membership:** Adult – (New) \$15, \$35 3 yrs, (Renewal) \$12, \$25 3 yr; Youth – (New) \$12, (Renewal) \$9; Family (2 Adults and any children under 19 residing at same address) – \$25, \$60 3 yr;

### North American Lionhead Rabbit Club

**Membership:** Adult- \$20/1 year, \$40/3 years; Youth \$15/1year, \$30/3 years; Family \$25 1/year, \$55/3 years. <http://www.lionhead.us>

### American Mini Lop Rabbit Club

**Membership:** Adult – (New) \$15, \$40 3 yr, (Renewal) \$12, \$30 3 yrs; Youth – (New) \$12, \$30 3 yr, (Renewal) \$8, \$20 3 yrs; Husband/Wife – (New) \$20, \$52 3 yr, (Renewal) \$15, \$40 3 yrs; Family – (New) \$25, \$70 3 yr, (Renewal) \$20, \$55 3 yrs;

### National Mini Rex Rabbit Club

**Membership:** Adult – \$25, \$55 3 yrs; H/W – \$30, \$70 3 yrs; Family – \$45, \$115; Youth – \$25, \$55 3 yrs

### American Netherland Dwarf Rabbit Club

**Membership:** USA-Adult New: \$25, \$60/3 yrs; Renewal: \$18, \$50/3 yrs USA-Youth New: \$20, \$45/3yrs; Renewal \$13, \$35/3 yrs USA-Family (2) New: \$30, \$65/3yrs; Renewal: \$20, \$52/3yrs USA-Family (3+) New: \$35, \$70/3yrs; Renewal: \$25, \$57/3yrs [www.andrc.com](http://www.andrc.com)

### American Federation of New Zealand Rabbit Breeders.

**Membership:** Adult – \$15, (Renewal) \$13; Youth – \$13, (Renewal) \$8; Husband/Wife – \$17, (Renewal) \$15; Family – \$28, (Renewal) 23

### American Polish Rabbit Club

**Membership:** Adult – \$12, \$30 3 yr; Youth – \$10, \$25 3 yr; Husband/Wife (or 2 individuals at the same address) – \$15, \$35 3 yr; Family – \$18, \$40 3 yr; <https://www.americanpolishrabbitclub.com/>

### National Rex Rabbit Club

**Membership:** Individual Adult or Youth (New) – \$20 (Each additional person at same address – \$5), 3 yr \$40 (Each additional person at same address – \$12); (Renewal) \$15 (Each additional person at same address – \$5), 3 yr \$30 (Each additional person at same address – \$12) [nationalrexrc.org](http://nationalrexrc.org)

### American Satin Rabbit Breeders Association

**Membership:** Adult – (New) \$17, \$35 3 yr, (Renewal) \$12, \$30 3 yr; Youth – (New) \$14, \$28 3 yr, (Renewal) \$9, \$23 3 yr; Husband/Wife – (New) \$19, \$40 3 yr, (Renewal) \$14, \$35 3 yr; Family – (New) \$22, \$46 3 yr, (Renewal) \$17, \$41 3 yr;

## American Standard Chinchilla Rabbit Breeders Association

**Membership:** Adult – \$8, \$22 3 yr; Youth – \$5, \$12 3 yr; Husband/Wife – \$12.00, \$27 3 yr

[www.ascrba.net](http://www.ascrba.net)

## American Tan Rabbit Specialty Club

**Membership:** Single (*New*) – \$13, (*Renewal*) \$8; Youth (*New*) – \$10, (*Renewal*) \$5; Husband/Wife (*New*) – \$17, (*Renewal*) \$12; Family (*New*) – \$20, (*Renewal*) \$15; Lifetime – \$80, (*New*) \$75 (*Renewal*) [www.atrsc.org](http://www.atrsc.org)





# SWRRBA Youth Contest Entry Form

Exhibitor Name: \_\_\_\_\_ Date of Birth \_\_\_\_\_

Address: \_\_\_\_\_

Phone No.: (\_\_\_\_\_) \_\_\_\_\_ - \_\_\_\_\_ Email: \_\_\_\_\_

## Age Division

Pre-Junior

Junior

Intermediate

Senior

## DATE OF BIRTH MANDATORY FOR ALL CONTESTANTS

## PLEASE SELECT CONTEST IN WHICH YOU WANT TO ENTER:

NOTE: IN ORDER FOR A CONTESTANT TO ENTER APRC ROYALTY CONTEST THEN THE CONTESTANT MUST EXHIBIT POLISH AND BE A MEMBER OF THE APRC.

PLEASE NOTE TO BE ENTERED IN APRC ROYALTY CONTEST YOU MUST SELECT THE SWRRBA SWEEPSTAKES CONTEST.

JUDGING

SHOWMANSHIP

BREED ID

RABBITY INFORMATION POSTER

CONTEST SWEEPSTAKES

COSTUME CONTEST

Exhibitors before entering a contest please review the descriptions! Those entering the Royalty Contest will enter in both divisions of SWRRBA Youth Contest and APRC Royalty Contest and awarded in both.

## FOR APRC ROYALTY:

APRC Membership Expiration Date: \_\_\_\_\_

## APRC Age Range:

King/Queen      Prince/Princess

Duke/Duchess      Lord/Lady

## Entry Deadlines

June 06, 2022 (Email)

May 25, 2022 (Mail)

## Youth Contest Secretary

Holli Walker PO Box 3893 Hobbs NM 88241

(325) 370-3003

[holli.walker@swrrba.org](mailto:holli.walker@swrrba.org)

By filing of an entry, you as the exhibitor have read and understand all SWRRBA Rules, and show information including SWRRBA Return Check Policy – If youth a parent signature is required –

\_\_\_\_\_  
Signature

\_\_\_\_\_  
Date

# SWRRBA Official Rabbit Entry Form

Exhibitor Name: \_\_\_\_\_ Date of Birth: \_\_\_\_\_

Address: \_\_\_\_\_

Phone No.: ( \_\_\_\_\_ ) \_\_\_\_\_ - \_\_\_\_\_ Email: \_\_\_\_\_

Division Open Youth

**POLISH & CINNAMON NATIONAL EXHIBITORS OVER 15 HOURS AWAY WILL YOU NEED COOPS?**

**NOTE:** IF YOUTH ENTRY A DOB IS REQUIRED OR THE ENTRY WILL BE ENTERED IN THE OPEN.

**YES NO**  
**IF YES, IT IS AN ADDITIONAL \$ 2.00**

**SHOWS ENTERING TABLE (COLOR CODED IN ENTRY TABLE BELOW)**

**A = FRIDAY ALL BREED/CAVY SHOW** | **B = SATURDAY AM ALL BREED/CAVY SHOW** | **C = SATURDAY PM ALL BREED/CAVY SHOW**  
**D = 6 CLASS CLASSIC** | **E = MINI REX AND REX CLASSIC** | **F = SWRRBA BREED SPECIALTY** | **G = MEAT PEN JACKPOT**  
**H = SINGLE FRYER JACKPOT** | **I = POLISH NATIONALS** | **J = CINNAMON NATIONALS** | **K = FUR**

| BREED | VARIETY | CLASS | SEX | EAR # | A     | B | C | D | E | F | G | H | I | J | K | FEE |
|-------|---------|-------|-----|-------|-------|---|---|---|---|---|---|---|---|---|---|-----|
|       |         |       |     |       |       |   |   |   |   |   |   |   |   |   |   |     |
|       |         |       |     |       |       |   |   |   |   |   |   |   |   |   |   |     |
|       |         |       |     |       |       |   |   |   |   |   |   |   |   |   |   |     |
|       |         |       |     |       |       |   |   |   |   |   |   |   |   |   |   |     |
|       |         |       |     |       |       |   |   |   |   |   |   |   |   |   |   |     |
|       |         |       |     |       |       |   |   |   |   |   |   |   |   |   |   |     |
|       |         |       |     |       |       |   |   |   |   |   |   |   |   |   |   |     |
|       |         |       |     |       | Total |   |   |   |   |   |   |   |   |   |   |     |

## Entry Fee(s) SWRRBA General Entry Cost

Early \$ 4.00 Late \$ 6.00

Ear Change \$ 1.25 Fur \$ 1.25

## Entry Fee(s) Both National Shows

Early \$ 7.00 Late \$ 18.00

Ear Change \$ 1.50 Fur \$ 2.00

## Entry Deadlines

SWRRBA General June 06, 2022, Email

June 03, 2022, Mail

National Shows May 23, 2022, Mail ONLY

**NATIONAL ENTRIES PAY IN ADVANCE ONLY**

## Rabbit Show Secretary:

Katie Finch 1907 Leon St Belton, TX 76513

Or entries can be emailed to:

swrrbashowsecretary@swrrba.org

## Entry Fee(s) for Meat Pen and Single Fryer Jackpot(s)

Single Fryer: \$ 10.00 | Meat Pen \$ 20.00

## 6 Class Classic Open and Youth

Early \$ 4.00 Late \$ 6.00

Ear Change \$ 1.25 Fur \$ 1.25

## Rex and Mini Rex Classic

Early \$ 4.00 Late \$ 6.00

Ear Change \$ 1.25 Fur \$ 1.00

By filling out a entry you as the exhibitor have read and understand all SWRRBA rules and show information including SWRRBA Return Check Policy – If Youth a Parent Signature is required –

Signature

Date

# Southwest Regional Rabbit Breeders Association

Zachary Weber  
*President*

Shirley Hensley  
*Vice President*



Katie Finch  
*Secretary*

Shanna Loflin  
*Treasurer*

## Application for Membership

Make checks payable to SWRRBA

Send To: Katie Finch– 1907 Leon St. Belton, TX 76513

Questions? – (512) 567-1249 | [swrrbshowsecretary@swrrba.org](mailto:swrrbshowsecretary@swrrba.org)

I hereby make application for membership with the Southwest Regional Rabbit Breeders Association and enclose the appropriate fees. I agree, if accepted to abide by the SWRRBA constitution, and by-laws and to further the interest of the rabbit hobby in every way possible.

### Dues:

|               |   |       |          |
|---------------|---|-------|----------|
| Adults/Youth: | New \$ 10.00                              | Renew | \$ 5.00  |
| H/W:          | New \$ 17.00                              | Renew | \$ 12.00 |
| Family:       | New \$ 20.00                              | Renew | \$ 15.00 |
| Lifetime:     | \$ 100.00 per person or \$ 150.00 for H/W |       |          |

---

Name(s) of Applicant: \_\_\_\_\_

Youth Name \_\_\_\_\_ Youth Date of Birth: \_\_\_\_\_

Youth Name \_\_\_\_\_ Youth Date of Birth: \_\_\_\_\_

Youth Name \_\_\_\_\_ Youth Date of Birth: \_\_\_\_\_

Mailing Address: \_\_\_\_\_

City, State, Zip: \_\_\_\_\_

Phone: \_\_\_\_\_ Email: \_\_\_\_\_

Breeds of Rabbits You Raise: \_\_\_\_\_

Recommended by: \_\_\_\_\_



## Banquet Reservation Form

Name \_\_\_\_\_ Number of People Attending \_\_\_\_\_

Address \_\_\_\_\_

Email Address \_\_\_\_\_

Attendance is \$24/person; included fees: \$ \_\_\_\_\_

The menu for the banquet includes an All-You-Can-Eat Buffet of Fajitas (brisket, chicken, and beef), Green Chili Chicken Enchiladas, Beans, Rice, and Salad. Included Beverages are Tea and Water; alcoholic beverages will be available for purchase at the bar in the banquet venue.

Reservations for the banquet must be postmarked and paid for by June 3, 2022.

Return completed Reservation Form to:

Banquet Reservations

c/o Zack Weber

PO Box 3893

Hobbs, NM 88241

Banquet location:

5001 W. Carlsbad Hwy

Hobbs, NM 88240



## RV Reservation Request Form

RV Spots are Full Electric, Water, and Sewage for \$18 per night. Please submit this form with payment by June 1, 2022. Send this document and fees to:

SWRRBA RV Reservations  
c/o Zachary Weber  
PO Box 3893  
Hobbs, NM 88241

RV Operator Name \_\_\_\_\_

Number of people anticipated in site \_\_\_\_\_

Phone Number \_\_\_\_\_

Home Address \_\_\_\_\_

City \_\_\_\_\_ State \_\_\_\_\_ Zip Code \_\_\_\_\_

Date of Arrival \_\_\_\_\_ Date of Departure \_\_\_\_\_

Fees Enclosed \$ \_\_\_\_\_

By Making this Reservation Request, you acknowledge your responsibility to carry insurance as required in your state of residence.